



KVM live Migration LAB

Day 03, Session 3.1

MIGRATING WITH VIRT-MANAGER

section covers migrating a KVM guest virtual machine with `virt-manager` from one host physical machine to another

MIGRATING WITH VIRT-MANAGER

- **Connect to the target host physical machine**

In the **virt-manager** interface, connect to the target host physical machine by selecting the **File** menu, then click **Add Connection**

- **Add connection**

The **Add Connection** window appears

Enter the following details

- **Hypervisor:** Select **QEMU/KVM**.
- **Method:** Select the connection method.
- **Username:** Enter the user name for the remote host physical machine.
- **Hostname:** Enter the host name for the remote host physical machine

Add Connection

Hypervisor: QEMU/KVM

Connect to remote host

Method: SSH

Username: root

Hostname: 10.34.57.165

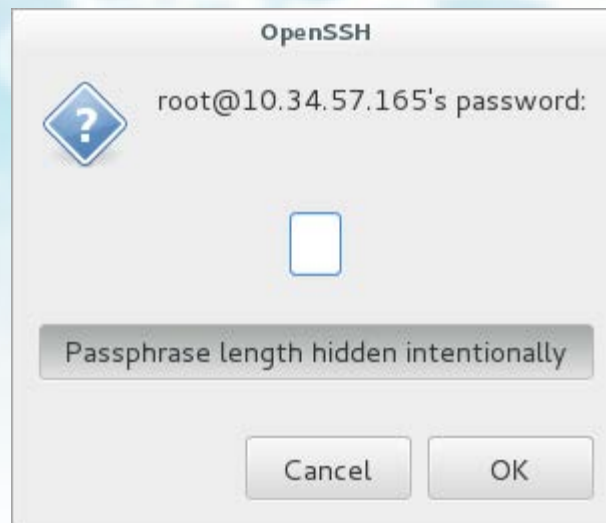
Autoconnect:

Generated URI: qemu+ssh://root@10.34.57...

Cancel Connect

MIGRATING WITH VIRT-MANAGER

- Click **Connect**. An SSH connection is used in this example, so the specified user's password must be entered in the next step
- **Configure shared storage**
Ensure that both the source and the target host are sharing storage
Ex: **LizardFS, ZFS, NFS** etc.



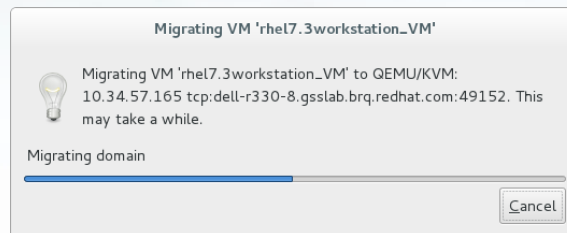
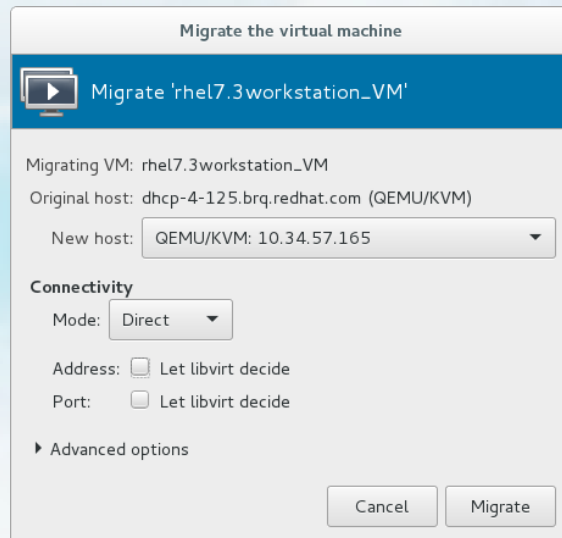
MIGRATING WITH VIRT-MANAGER

- **Migrate guest virtual machines**

Right-click the guest that is to be migrated, and click **Migrate**.

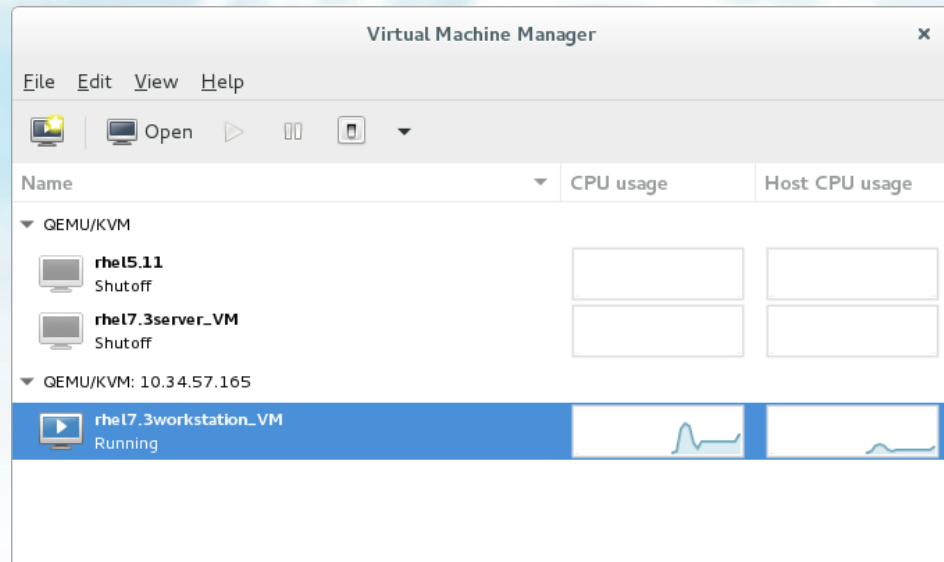
In the **New Host** field, use the drop-down list to select the host physical machine you wish to migrate the guest virtual machine to and click **Migrate**

- **A progress window appears**



MIGRATING WITH VIRT-MANAGER

If the migration finishes without any problems,
virt-manager displays the newly migrated guest virtual
machine running in the destination host





Any Questions ?

Thank you