



# Windows Installation with VIRTIO

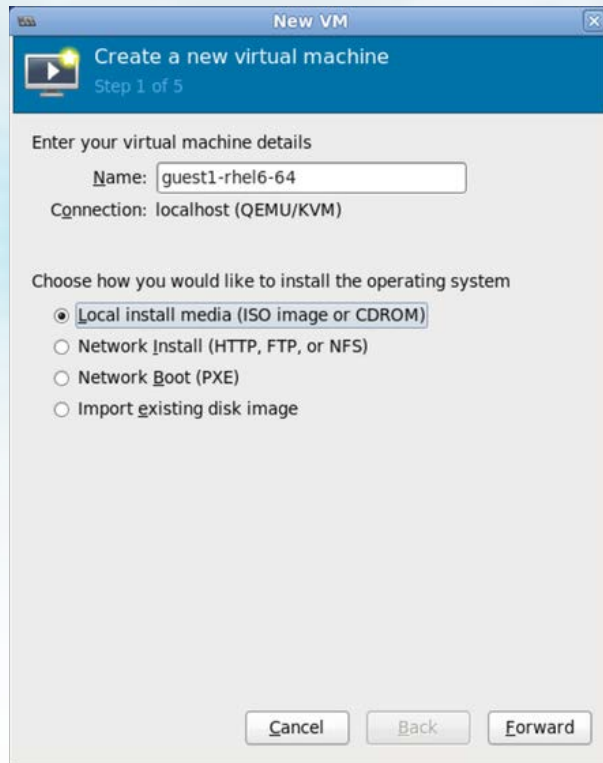
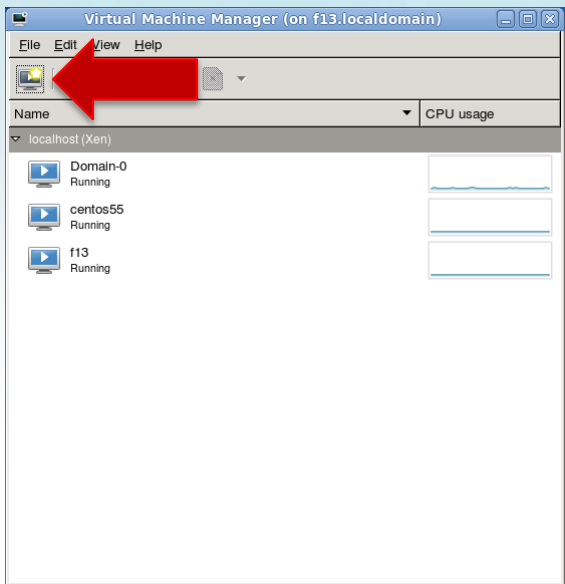
Day 02, Session 2.2



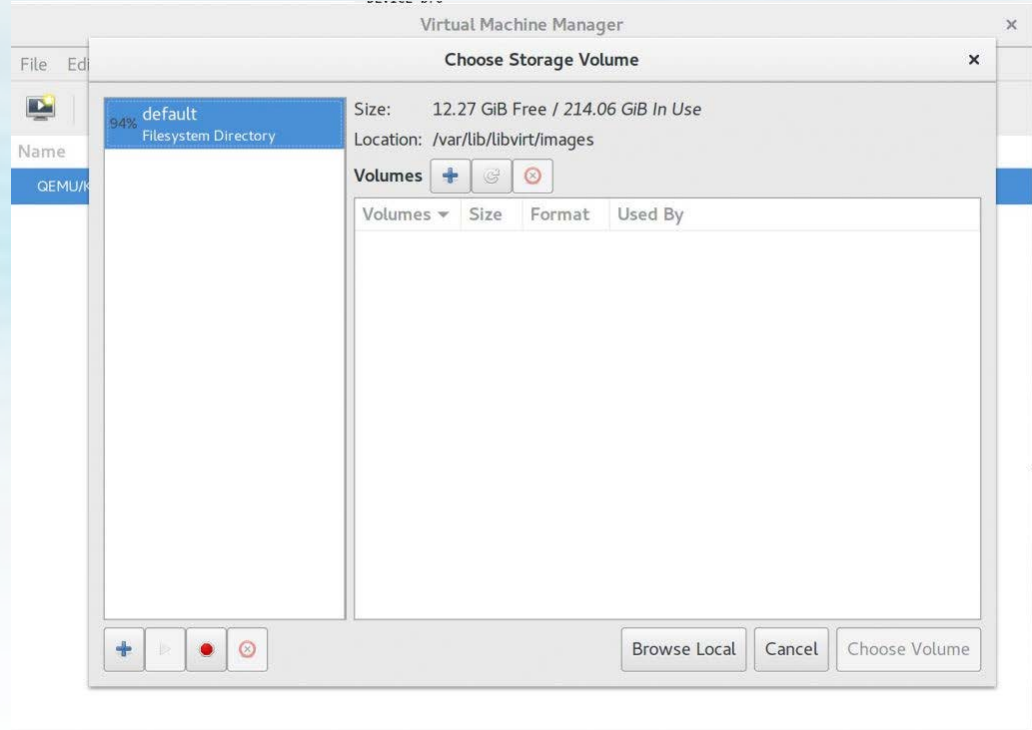
**Virtio** is a virtualization standard for network and disk device drivers where just the guest's device driver "knows" it is running in a virtual environment, and cooperates with the hypervisor. This enables guests to get high performance network and disk operations, and gives most of the performance benefits

# Preparing VM

- Create the instance



- Select Windows ISO
  - Browse Local
  - Choose OS type



# Installing VIRTIO

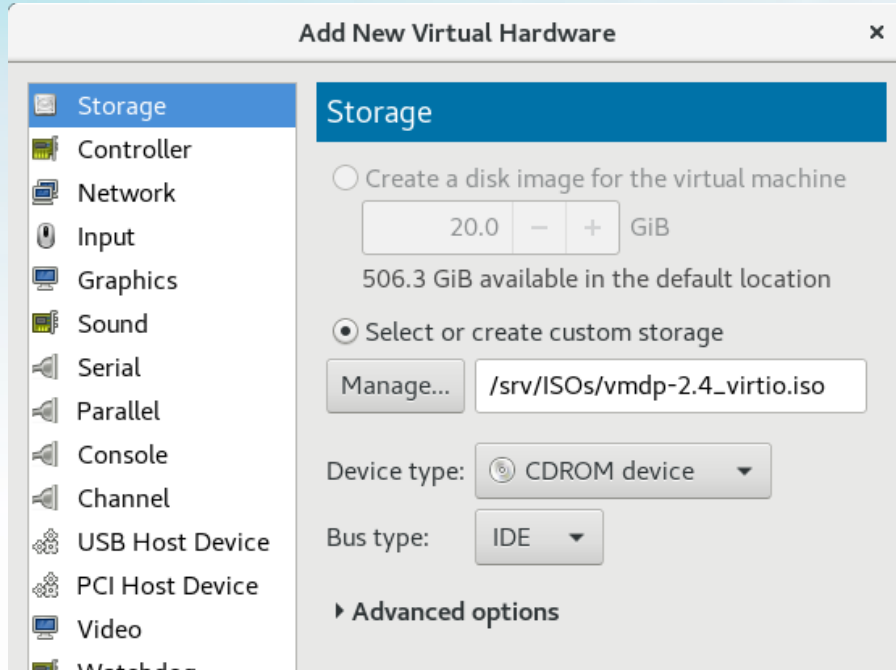
- For a Windows guest, it is necessary to install the latest virtio drivers into the guest OS
- So we will map virtio to a Floppy Disk/CD ROM Drive by **CLI / virt-manager**
  - `virsh attach-disk *vm_name* /usr/share/virtio-win/virtio-win.vfd fda --type floppy`

# Mapping FDD



- Select storage device
- Click **Browse**
- In the window that opens, click **Browse Local**
- Navigate to virtio-win.vfd click **Select** to confirm
- Change *Device type* to **Floppy disk**
- Click **Finish** to continue

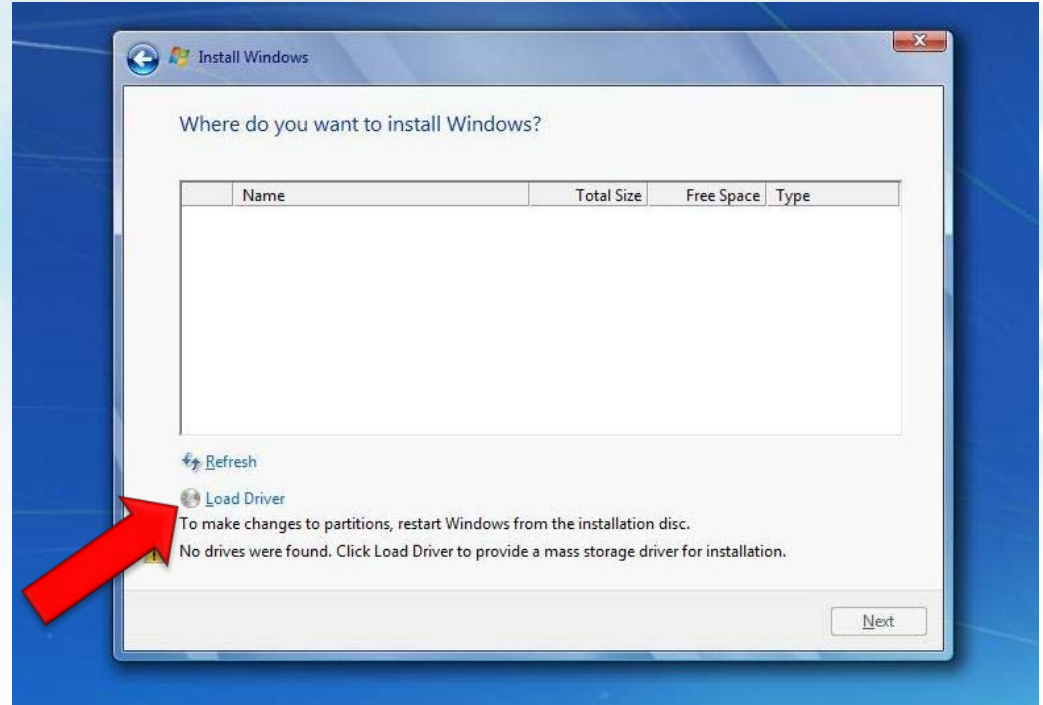
# Mapping CDROM



- Select storage device
- Click **Browse**
- In the window that opens, click **Browse Local**
- Navigate to virtio-win.iso click **Select** to confirm
- Change *Device type* to **CD-ROM**
- Click **Finish** to continue

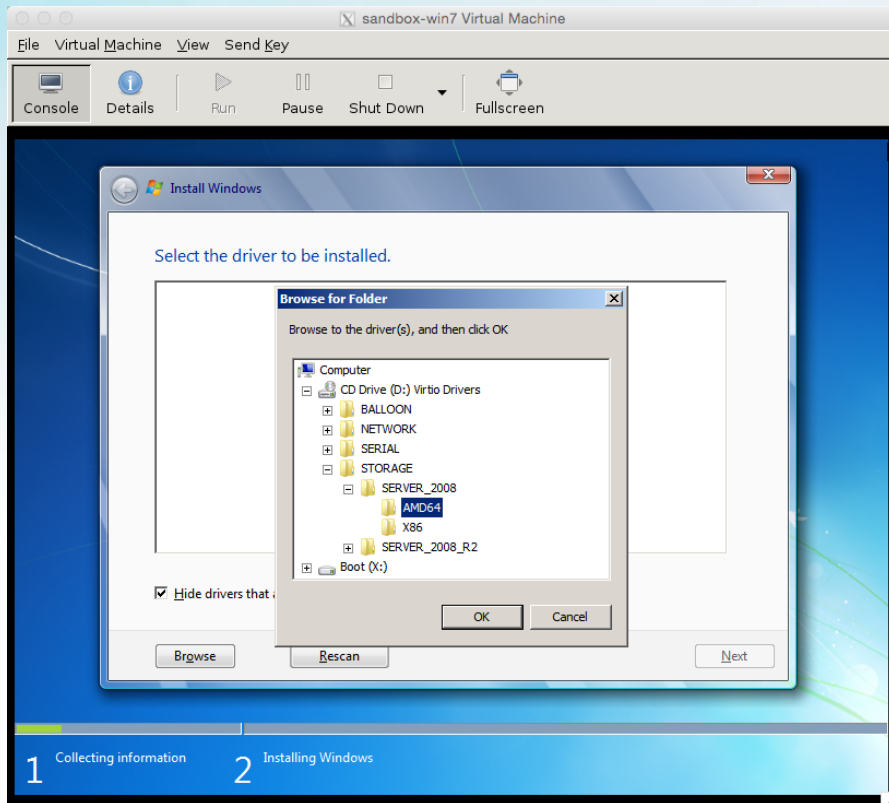
# Installing Windows

- Start the VM
- Continue installation
- You will not find any drive
- Select **Load Driver**



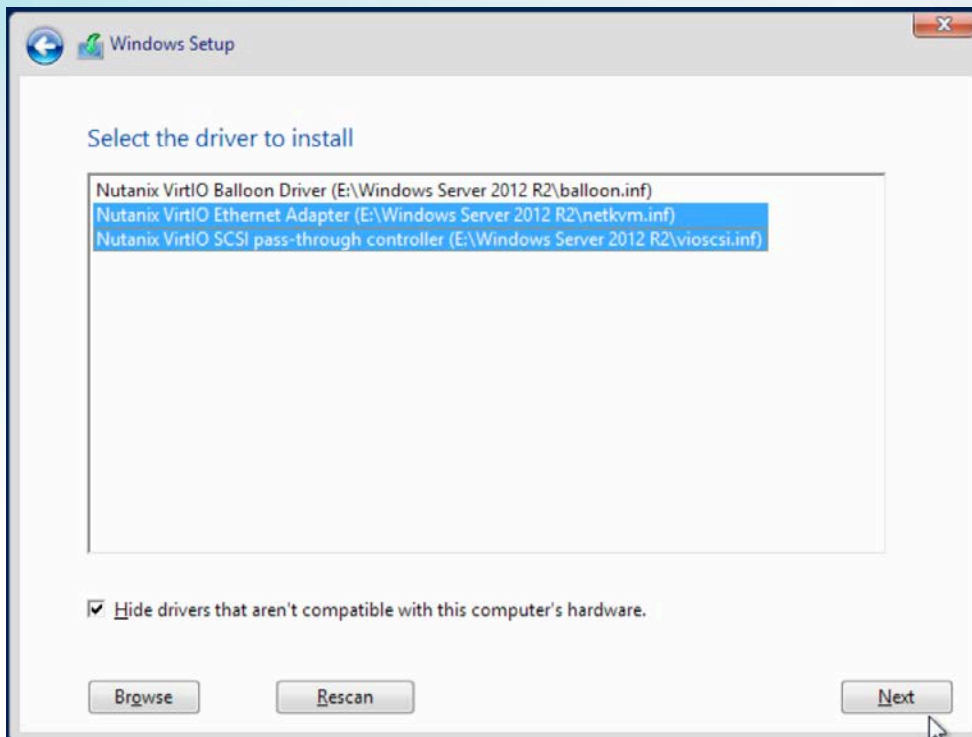


# Select Virtio Drive



- Select your mounted Drive
- CD-ROM / Floppy Drive
- Browse viostor (Virtio block driver)
- Select your Windows version

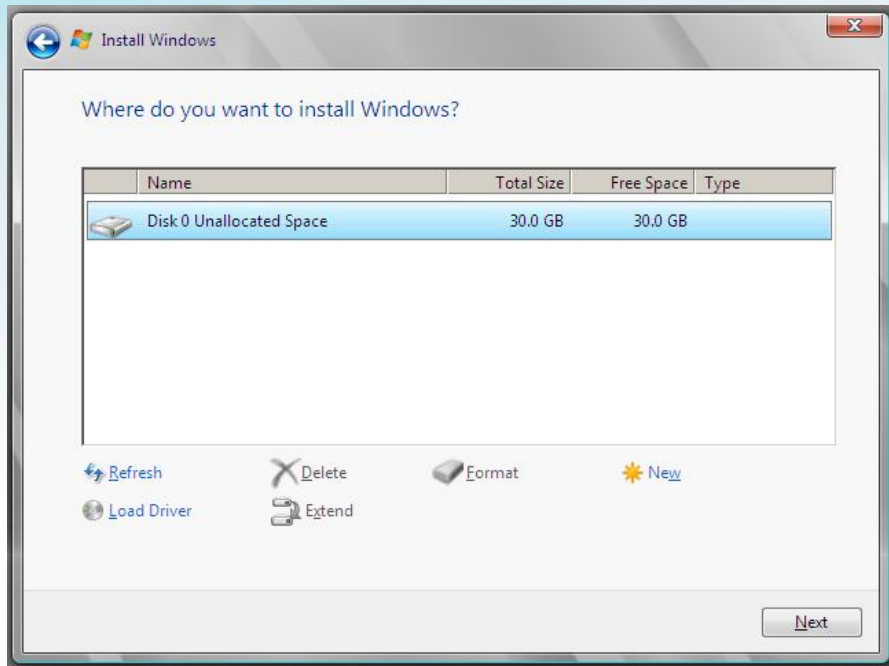
# Select Virtio Driver



Select all three drivers and "Next"

**Note:** It might be one driver depending on your VM Creation Architecture

# Select Storage Space



- You will be able to see your drive
- Continue the installation as normal



**Any Questions ?**

**Thank you**